

# CHANGE IS SIMPLE

SCIENCE OF SUSTAINABILITY

Lauren Belmonte

Patrick Belmonte

Co-Directors & Co-Founders

*Instilling lifelong social and environmental responsibility through experiential learning that inspires action for healthy people, planet & community.*



Integrating sustainability | CiS approach | School based

# HISTORY



2019-2020 School Year

**9,000+**

Students Educated



Globally minded / locally active



 **56**  
Schools Served

2011 - 2020

 **76**  
College Mentors  
Trained

**32,449**  
 Total Students  
Educated

**K-16**  
Grades Served



Serving Middlesex,  
Essex & Suffolk Counties



# WHAT WE DO

- In-School FREE Multi-year program
- 35+ units of education
  - *Hands-on workshops*
  - *Each classroom receives 4+ units with CiS annually*
  - *Classroom teachers receives customized curriculum to continue the learning beyond our visits.*
- Planning & PD with teachers
- Learning that blows out the walls of the classroom and empowers children to make change and aspire to be leaders.



# Need

- Climate change unites us all
  - Environmental health = human health
  - Resilient communities
- Shift paradigm of environmental education
  - Learner centric
  - Integrating all subject areas
- Boost STEM for schools and students





# LOST EINSTEINS

Why STEAM needs to be inclusive & equitable:

- [Stanford Study](#) / [NYTimes](#)
- [Microsoft study](#)
  - College Mentors
  - Innovative tools, and tech
  - STEM professionals
  - Real world skill development



# IT'S NOT JUST SCIENCE

**AND IT IS NOT JUST FOR SCIENTISTS:** If an entire generation grows up knowing the importance of their actions no matter what they become- a banker, lawyer, engineer, scientist, politician, artist, etc.- they will uphold and remain committed to the ideals that CiS teaches.

Art

Design

Media

Communication



# Improve achievement and engagement

## Designed for schools

- Serve all children
- Fulfill school objectives
  - *Multidisciplinary*
  - *Common Core*
  - *NGSS*
  - *SEL*
- Impact children, families and planet



# WHAT DO STUDENTS LEARN WITH CHANGE IS SIMPLE?

## Water conservation



## Watershed protection





# WHAT DO STUDENTS LEARN WITH CHANGE IS SIMPLE?

## Ocean Health



## Marine Species Protection



# WHAT DO STUDENTS LEARN WITH CHANGE IS SIMPLE?

## Ecosystems, Endangered Species & Biodiversity



# WHAT DO STUDENTS LEARN WITH CHANGE IS SIMPLE?

## Healthy Homes



## Green Chemistry





# WHAT DO STUDENTS LEARN WITH CHANGE IS SIMPLE?

## Growing Food



## Hydroponics





# WHAT DO STUDENTS LEARN WITH CHANGE IS SIMPLE?

## Protecting Pollinators

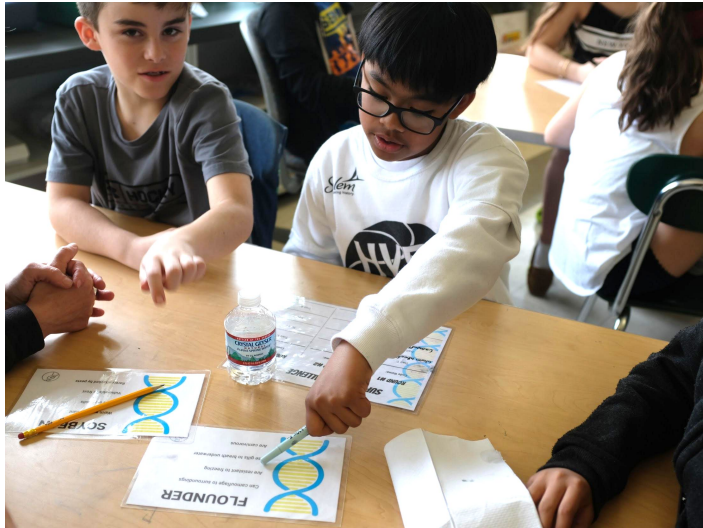


## Global Food System



# WHAT DO STUDENTS LEARN WITH CHANGE IS SIMPLE?

## GMOs



## Soil Health



# WHAT DO STUDENTS LEARN WITH CHANGE IS SIMPLE?

## Natural Resources



## Waste Reduction





# WHAT DO STUDENTS LEARN WITH CHANGE IS SIMPLE?

## Renewable Energy



## Electric Vehicles





# WHAT DO STUDENTS LEARN WITH CHANGE IS SIMPLE?

## Sustainable Communities



## Climate Change

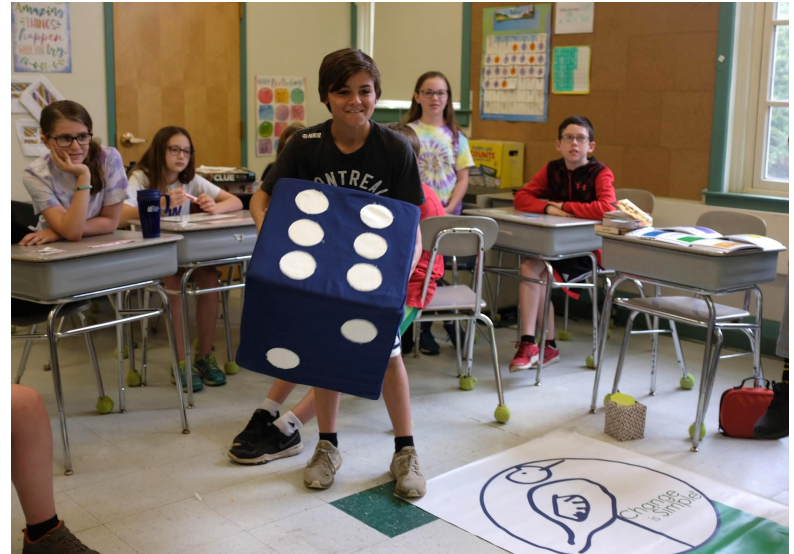


# WHAT DO STUDENTS LEARN WITH CHANGE IS SIMPLE?

## Deforestation



## Carbon Footprint



# IT'S FUN FOR STUDENTS

RELEVANT

MEMORABLE

DISCOVERY-BASED





# FUNDING

NO COST TO STUDENTS and  
FAMILIES

75% COVERED BY OUR OWN  
FUNDRAISING



*“Change is Simple provides the kind of learning that makes kids want to go to school.”*

*- Debra Lay, Principal Beverly Public Schools*



# RESEARCH & DATA

## *Program Evaluation*

- Multi-year study conducted by two Northeastern University Professors
- Qualitative and quantitative data analyzed:
  - Changes in environmental behaviors
  - Improvement in learning outcomes

## *Results*

- *Students scored 85% higher in content knowledge*
- *Students improved in their understanding of math, literacy and science*
- *Students demonstrated a 94% engagement rate in their learning with Change is Simple*
- *Students & teachers recognized a significantly higher level of motivation to learn about climate and environmental sustainability*
- *87% of students continue to take action 6 months after interventions and encourage others to them to join them*

# RESEARCH & DATA

## **MICHAEL LISTER, PRINCIPAL, SALTONSTALL SCHOOL, SALEM, MA**

"Working with Change is Simple brings legitimacy and relevance to environmental sustainability issues and the need for us to address them as a society. Our students are left craving more from Change is Simple as they begin to see their world differently, how to apply practical solutions for sustainability and truly make a difference."

## **CHRISTINE SENECHAL & SAMANTHA COLBY, GRADE 6 SCIENCE TEACHERS, IPSWICH, MA**

"The relationship we have developed with Change is Simple has been a positive one that has greatly benefited our curriculum and our students. Change is Simple provides us with materials, knowledge and additional staff to run focused, hands-on critical thinking activities with our students."

# METHODOLOGY & THEORY OF CHANGE

## Methods

- Social Emotional Learning
- Project Based Learning & design thinking
- Hands-on 21st century learning
  - Inquiry based
  - Place based
- Real world/ applied concepts

## Theory of Change

- Social Incentives
- Emotional appeal
- Choice Architecture



*“Change is Simple provides the kind of learning that makes kids want to go to school.”*  
*- Debra Lay, Principal Beverly Public Schools*

# SOCIAL INCENTIVES

Harnessing the fact that we are profoundly impacted by our social environment

- Work in teams & as a class
- Incentivize good work
- Find support from people that students look up to
- Show them how it applies in the real world





# EMOTIONAL APPEAL

Learning that elicits an emotional response:

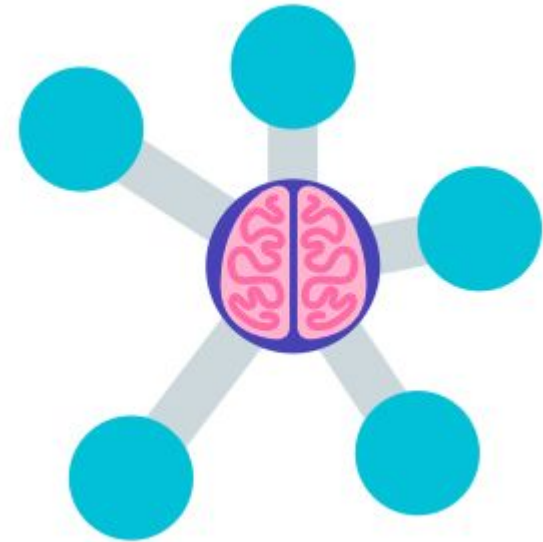
- Fun activity
- Something that gets them excited: learning tools, materials
- Celebrating good work: awards, announcements, badges
- Stories, videos that show repercussions of in/action
  - Discuss the impacts: who, what, where, when
  - And how to be the change



# CHOICE ARCHITECTURE

## Opportunities to make change

- Clarity of action
- Time of action
- Place of action
- Reason for action
- Ability to measure impact



# INCORPORATING SOCIAL EMOTIONAL LEARNING

- Bring enthusiasm about our topic and interacting with our teachers and students
- Give students time to process experiences and information
- Make connections with the students that build positive relationships and foster lifelong learning
- Provide an engaging and interactive environment for learning
- Provide an inclusive educational setting
- Integrate reflection activities for teachers and students





# BIG PICTURE THINKERS



To our students it is not just an apple:

- They see the farm in Argentina where it was grown
- They see resources that went into growing it; pesticides, water etc.
- They care about the conditions for the farmer
- They understand the carbon created to transport
- They can weigh other options
- They understand why to shop local and,
- they're actively thinking of ways to improve the system



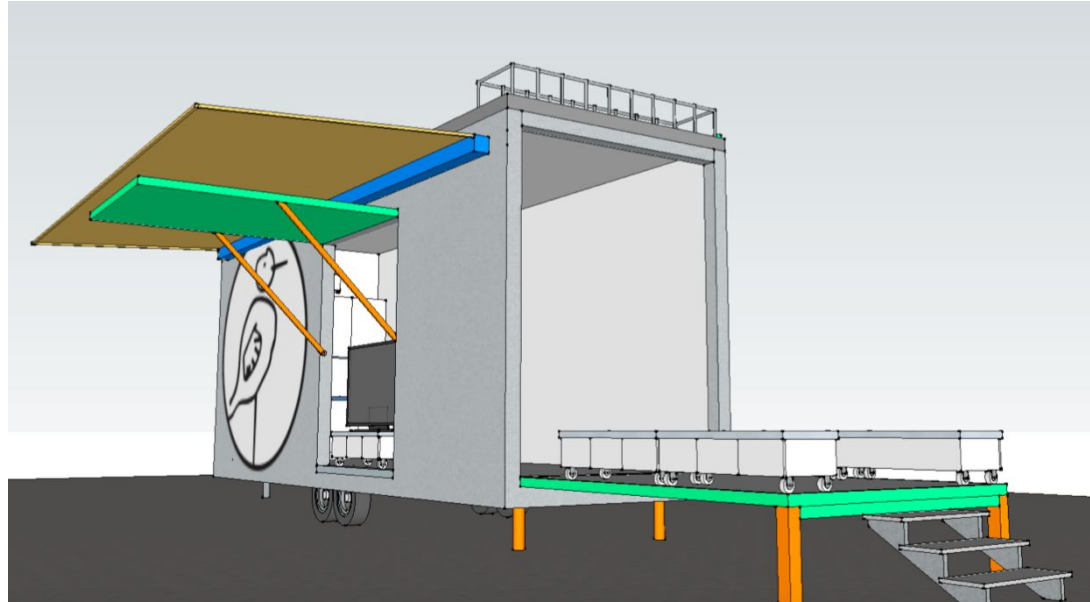
# VISION



## SCILL: MOBILE Lab

Sustainability & Climate  
Innovation Learning Lab.

*Bringing a lab to where kids learn...*



# VISION



## SCILL: MOBILE LAB

Sustainability & Climate  
Innovation Learning Lab.  
*Bringing a lab to where we learn...*

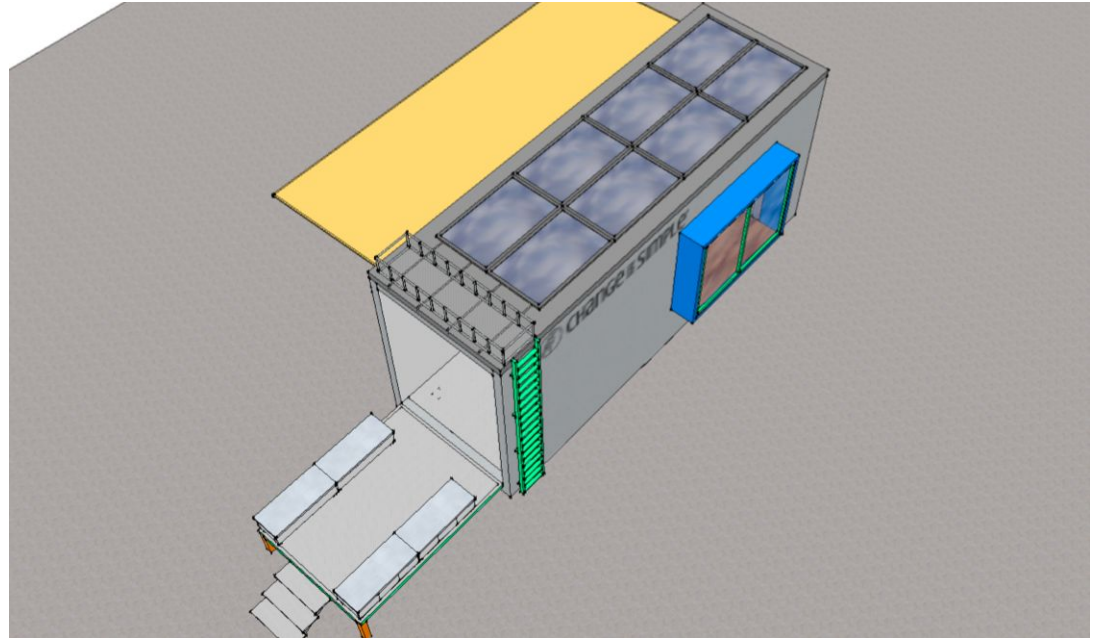




# VISION



Sustainability & Climate  
Innovation Learning Lab.  
*Bringing a lab to where we learn...*



# VISION



Teacher  
Training



Online Learning  
Portal



Change  
Tracking App

## On Demand Learning

Our On Demand learning section includes activities for students to complete that are topic specific. Each activity will have an introductory video, background information, questions, and a variety of activities to complete! Check out each one for educational standards it meets, essential questions, and further activity details! Have fun!

### NEWEST ACTIVITY UPLOAD:

FEATURED

VERNAL POOLS OF NEW  
ENGLAND (3 OF 3)

Sep 17, 2020



VERNAL POOLS OF NEW  
ENGLAND (2 OF 3)

Sep 17, 2020



VERNAL POOLS OF NEW  
ENGLAND (1 OF 3)

Sep 17, 2020

### EXPLORE OUR ON DEMAND LEARNING BY CATEGORY:

#### Waste Reduction:



# Q & A + CONTACT INFO

Lauren Belmonte, Co- Founder & Executive Director

[lauren@changeissimple.org](mailto:lauren@changeissimple.org)

Patrick Belmonte, Co-Founder & CEO

[patrick@changeissimple.org](mailto:patrick@changeissimple.org)

Website: [www.changeissimple.org](http://www.changeissimple.org)

